

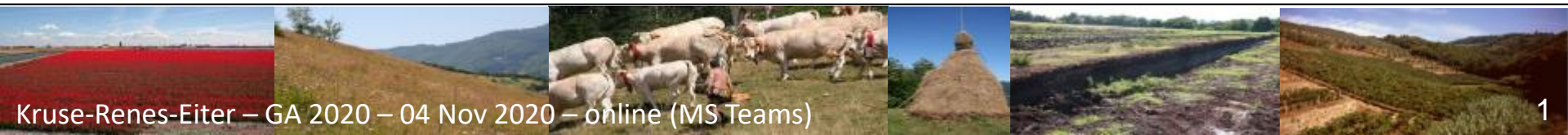
EUCALAND

Institute for Research on European Agricultural Landscapes e.V.

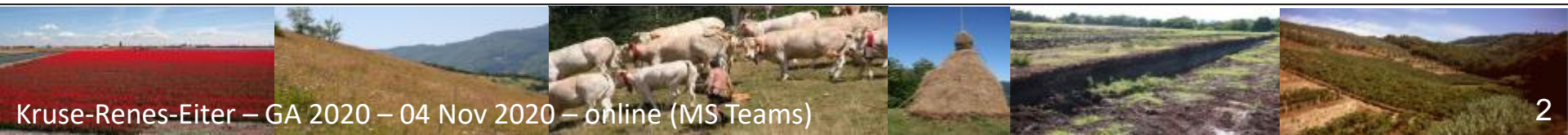
Regular Members General Assembly

04 Nov 2020, online (MS Teams)

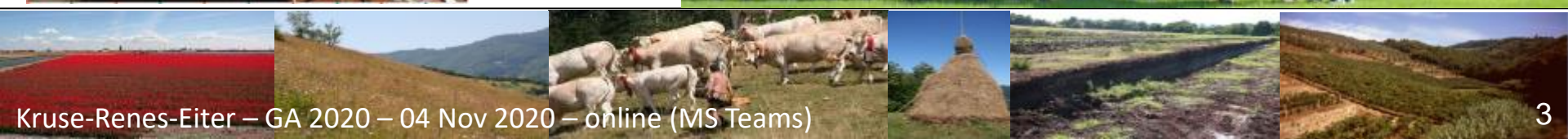
Hans Renes, Alexandra Kruse, Sebastian Eiter



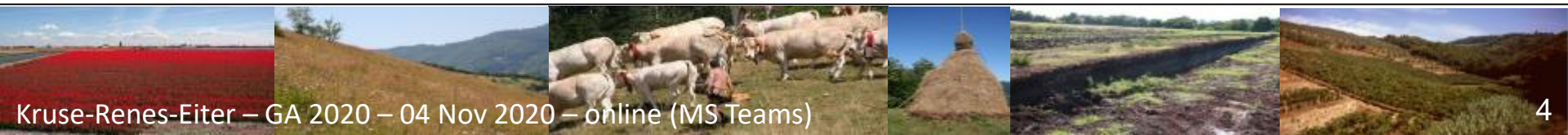
1. Opening by Hans Renes, Alexandra Kruse and Sebastian Eiter
2. Short roundtable presentation (name, country, institution) of the participants
3. Report on activities following the GA 2018 in Clermont-Ferrand (FR) including research, publication, calls
4. Financial report
5. Acceptance of the reports and accounts
6. Exculpation of the Executive Board
7. Presentation of the budget, incl. setting of member fees
8. Discussion & approval of the budget
9. Confirmation of new members
10. Exclusion of members
11. Election of the Executive Board
12. Election of two financial controllers or auditors
13. Information on upcoming activities
14. Miscellaneous



1. Opening by Hans Renes, Alexandra Kruse and Sebastian Eiter
2. Short roundtable presentation (name, country, institution) of the participants



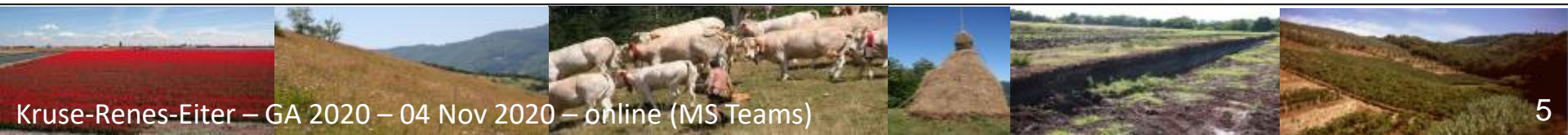
3. Activity report



2020

- 30 members
- from 17 different countries
- 18 individual
- 12 institutional

**EUICALAND is open to everybody –
New members welcome!**



- FEAL 2016 – 2019 is finished, dissemination goes on, via publications, twitter, presentations <https://cs.feal-future.org/en>
- Interactive EAL maps to complete the e-Atlas are under progress <https://www.feal-future.org/eatlas/en>



About FEAL

FEAL: multifunctional Farming for the sustainability of European Agricultural Landscapes

National Multiplication Event: Slovakia

Information & registration: slovakia@feal.eu



Gorná, 12th March 2019 | Gorná, 12th March 2019 | Slovakia, 12th April 2019 | Spain, April 2019 | Italy, 18th May 2019



Final Conference: Brussels, Belgium



Free search

Landscape Category: All

Country: All

Order: ASC



18 Culture Promotes in France
The estates are still in progress, the estates are still a work in progress.

This technique is known as the 'leaky'.

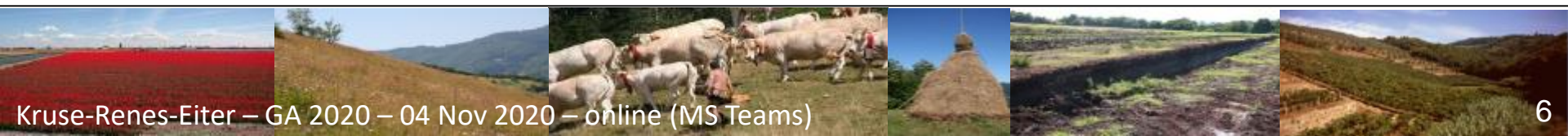
[READ MORE](#)



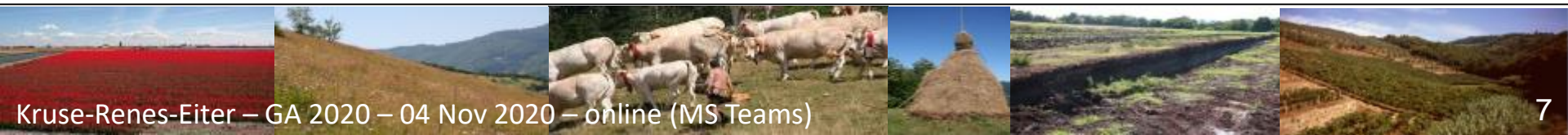
18 Culture Promotes in France
The estates are still in progress, the estates are still a work in progress.

This technique is known as the 'leaky'.

[READ MORE](#)



- ✓ 2012: Wooded grasslands (coordinator: Csaba Centeri)
- ✓ 2013: Water Meadows (coordinator: Hans Renes)
- 2014: Enclosed fields (Hans Renes/Alexandra Kruse/Goran Andlar)
will be published in 2021 in “Landscape History” Journal of the
Society for Landscape Studies as a Supplementary Volume
- ✓ 2015: Terraced Landscapes (coordinators: Drago Kladnik)
- 2017: Hay Making Landscapes (Jana Spulerova, Alexandra Kruse)
1 publication in Sustainability, one to come
- 2018: Orchards (coordinator: Hans Renes)
- 2019: Scattered Landscapes (coordinator: tbc.)
- 2020: Reclamation Landscapes (coordinator: Alexandra Kruse &...)

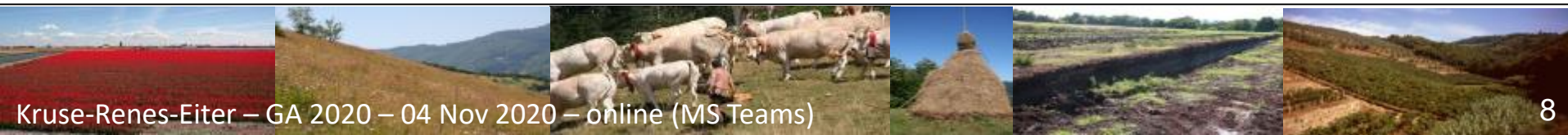
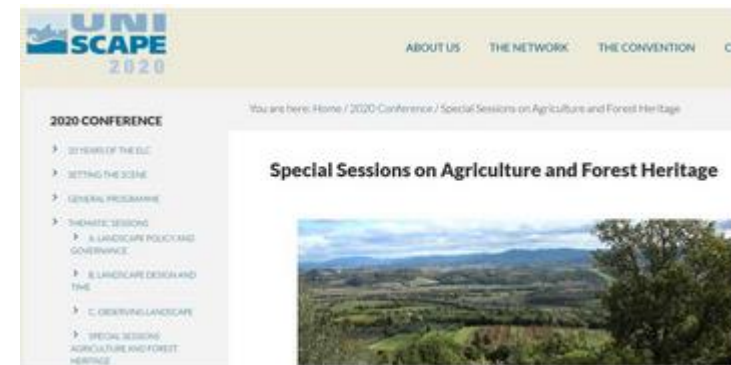


- April 2019 11th EUCALAND Workshop, Ljubljana, Slovenia: “Dispersed settlements”
- March 2020 12th Workshop, Jork, Germany: “Reclamation landscapes” – cancelled due to Corona. We will catch-up in due time
- 20th anniversary of the ELC – UNISCAPE-conference in Florence
<https://uniscapconference.myquadra.it/>

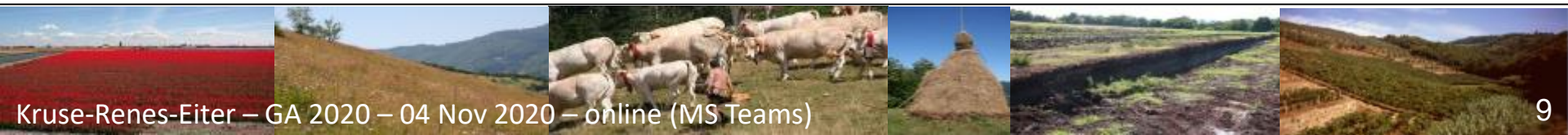
EUCALAND was co-organiser with Univ. of Florence (Mauro Agnoletti & Antonio Santorro) of the Special Session on Agriculture and Forest Heritage <https://uniscapconference.myquadra.it/conference-programme/>

with 38 attendees, 7 presentations,
2 Video-Posters, 2 proceedings:

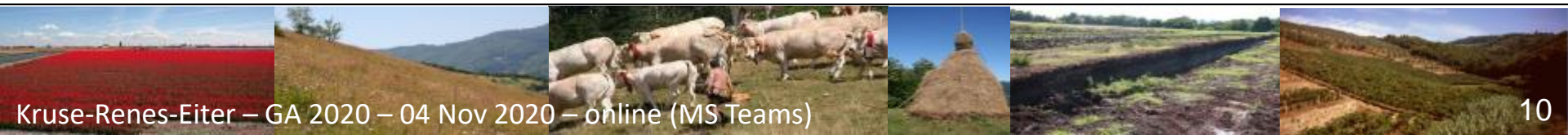
Sustainability and Springer Book



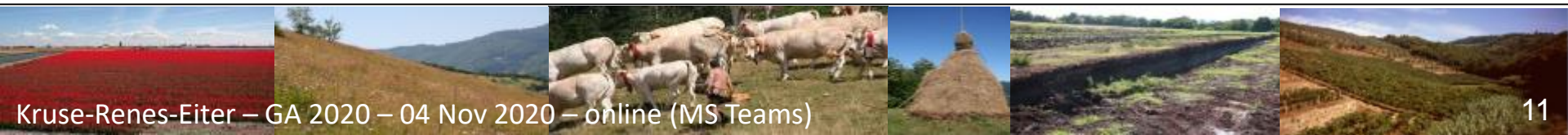
- 2x AGRI-HERITAGE: Fostering knowledge and youth engagement in our cultural heritage via rural Europe's agricultural landscapes' by Natalia Truszkowska - Farm Advisory office@farm-advisory.eu
- 2x COST: HERITIN (lead: Bosnia-Herzegovina)
- Erasmus+: Empower-YOU (lead: The Polish Farm Advisory and Training Centre not-for-profit Sp.)
- H2020: Terroirs (Lead: Perugia University)
- Erasmus+: RURAL REVIVE (lead: The Polish Farm Advisory and Training Centre not-for-profit Sp.)
- Erasmus_Knowledge-Alliance LAND
- Erasmus+: BecomandIT (lead: Slovakian Rural Parliament)



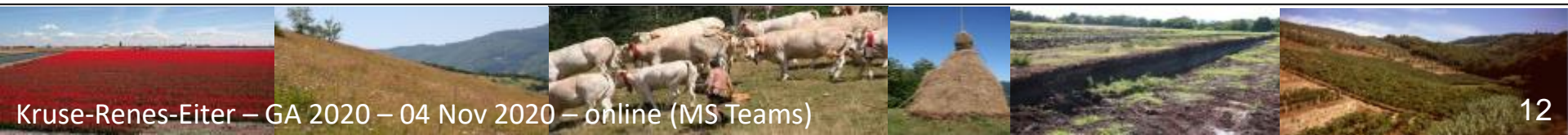
- Fischer, C. & M. Roth (2020): Empfindlichkeit des Landschaftsbildes. Bewertung durch großräumige Fernsehbarkeitsanalysen. In: Naturschutz und Landschaftsplanung 52 (6): S. 280-287.
- Gaillard, B., Kruse, A. & M. Slámová (2020): "FEAL: Multifunctional farming and European agricultural landscapes", in Journal of European Landscapes, 1: 43-48, doi: 10.5117/JEL.2020.1.56038.
- Hildebrandt, S. & M. Roth (2020): Landschaftsbildbewertung auf Landesebene - Stand und Eignung gängiger Verfahren. In: Naturschutz und Landschaftsplanung 52 (2): S. 62-67.
- Slámová, M., Belčáková, I. (2020): "The Vineyard Landscapes. History and Trends of Viticulture in Case Studies from Slovakia." In Pirineos. ISSN 0373-2568. 2020, Vol. 175, Enero-Diciembre, e056.
- Frolova, M., Frantál, B., Ferrario, V., Centeri, C., Herrero-Luque, D., Grónás, V., Martinát, S., Puttilli, M., Almeida, L., D'Angelo, F. (2019): Diverse Energy Transition Patterns in Central and Southern Europe: A Comparative Study of institutional Landscapes in the Czech Republic, Hungary, Italy and Spain. TÁJÖKOLÓGIAI APOK Journal of Landscape Ecology Vol 17, Special Issue 1: 65-89.
- Kruse, A. & B. Paulowitz (2019): The Hollerroute – Landscape Awareness as a driving factor in regional development. TÁJÖKOLÓGIAI APOK Journal of Landscape Ecology Vol 17, Special Issue 1: 19-31.
- Kruse, A. & B. Paulowitz (2019): Holler Colonies and the Altes Land: A Vivid Example of the Importance of European Intangible and Tangible Heritage. In: Carola Hein (ed): Adaptive Strategies for Water Heritage: Past, Present and Future.
- Ribeiro, D., Šmid Hribar, M. 2019: Assessment of land-use changes and their impacts on ecosystem services in two Slovenian rural landscapes. Acta Geographica Slovenica 59-2.
- Roth, M. (2019): Green-energy landscapes – solution to a dilemma. In: European Energy Innovation, Winter 2019: pp. 28-29. Available at: [eucaland.net/publications](https://www.eucaland.net/publications)
- Roth, M. & Fischer, C. (2019): Indikatorbasierte GIS-operationalisierte Landschaftsbildbewertung für den Freistaat Thüringen. In: AGIT - Journal für angewandte Geoinformatik 5-2019: S. 403-416.
- Schwarz-von Raumer, H.-G., Borsdorff, M., Roser, F., Roth, M. & Hildebrandt, S. (2019): Recreational Quality and Importance of Landscape: An Approach Beyond Scenic Aspects. In: Journal of Digital Landscape Architecture 4-2019: pp. 57-65.
- Slámová, M., Kruse, A., Gaillard, B., Benedetti, I. & J. Dreer (2019): Evaluation of Case Studies in European Agricultural Landscapes - The FEAL project. TÁJÖKOLÓGIAI APOK Journal of Landscape Ecology Vol 17, Special Issue 1: 5-17.
- Špulerová, J., Kruse, A., Branduini, P., Centeri, C., Eiter, S., Ferrario, V., Gaillard, B., Gusmeroli, F., Jurgens, S., Kladnik, D., Renes, H., Roth, M., Sala, G., Sickel, H., Sigura, M., Štefunková, D., Stensgaard, K., Strasser, P., Ivascu, C.M. & K. Öllerer: Past, Present and Future of Hay-making Structures in Europe; Sustainability 2019, 11, 5581;
- Renes, H., Centeri, C., Kruse, A. & Z. Kučera: "The Future of Traditional Landscapes: Discussions and Visions" - Land 2019, 8(6), 98;
- Renes, H., C. Centeri, S. Eiter, B. Gaillard, A. Kruse, Z. Kučera, O. Puschmann, M. Roth, M. Slámová (2019): Water Meadows as European Agricultural Heritage. In: Carola Hein (ed): Adaptive Strategies for Water Heritage: Past, Present and Future.



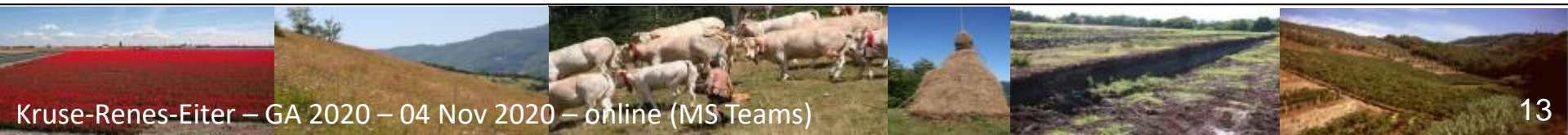
4. Financial Report



Balance 2018		
	Amount (EUR)	Remark
Account 1st Jan	166,95	
Income		
Membership fees	1590	22 network members: 10 individuals and 11 institutions; plus 3 individual and 1 institutional fee for earlier years
COST RELY	240	Local organiser support for hosting a meeting
FEAL 2nd rate	21903,4	
FEAL Salary refund of 2017	590	
Private loan Secretary general	3000	to pay FEAL-related salary tax in time
Total	27323,4	
Expenditures		
Bank costs	-96,28	
Other operating expenses	-200,47	Travel costs and fees to notary and tax consultant
FEAL Salary tax	-3098,1	
FEAL Project salary and other expenses	-12877,68	
FEAL Service contract flow-through	-3936	Website, case study database, e-atlas
Private loan Secretary general	-3000	(cf. Income)
Total	-23208,53	
Balance	4114,87	
Account 31st Dec	4281,92	(Mismatch with book: +0,10 EUR)



Balance 2019		
	Amount (EUR)	Remark
Account 1st Jan	4281,92	
Income		
Membership fees	1680	25 network members: 13 individuals and 12 institutions; plus 3 individual fees for earlier years
FEAL project final rate	10818,1	
Private loans Secretary general / President	3000	to pay FEAL-related salary tax in time
Total	15498,1	
Expenditures		
Bank costs	-92,47	
Other operating expenses	-555,69	Mostly tax advice
FEAL Project salary, taxes and other expenses	-11929,04	
FEAL Service contract flow-through	-2160	
Private loans Secretary general / President	-3000	(cf. Income)
Total	-17737,2	
Balance	-2239,1	
Account 31st Dec	2042,84	



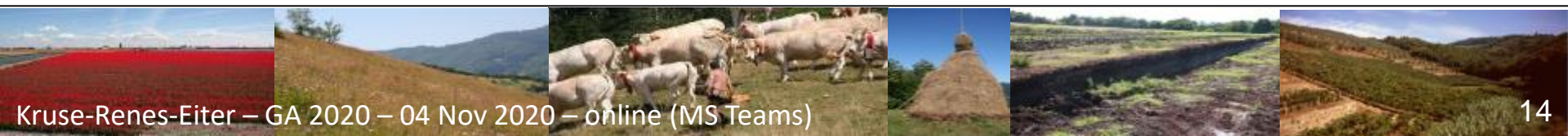
AUDITORS' REPORT FOR 2018 AND 2019

The undersigned have reviewed EUCALAND's accounts, based on the complete accounting books and monthly bank account documentation. We confirm that accounting is correct and that all expenditures are in accordance with the statutes of the association. Therefore, we recommend that the General Assembly exculpates the Executive Board for the financial years 2018 and 2019.

Berlin/Gödöllő, 26 October 2020

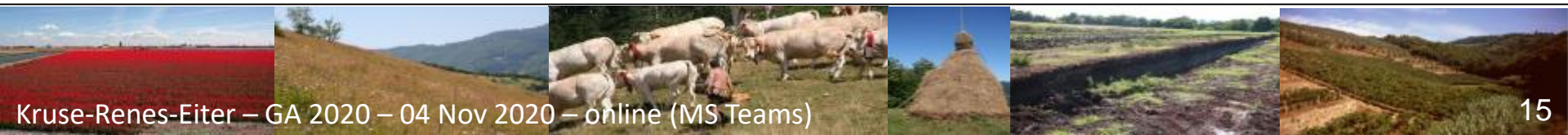
Bénédicte Gaillard, Csaba Centeri

Financial Auditors

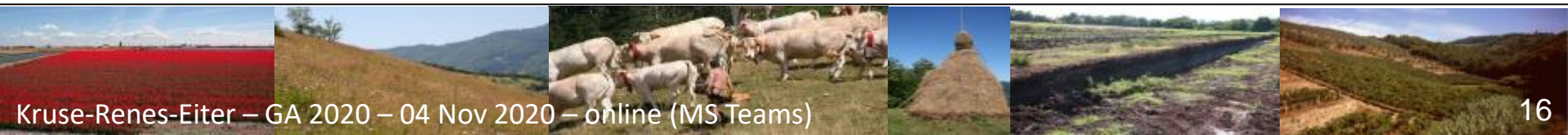


5. Acceptance of the reports and accounts

6. Exculpation of the Executive Board

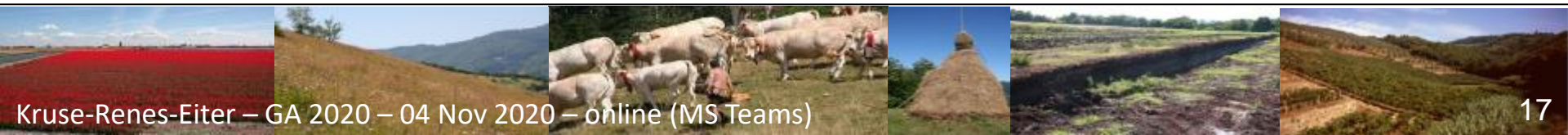


7. Presentation of the budget, incl. setting of member fees



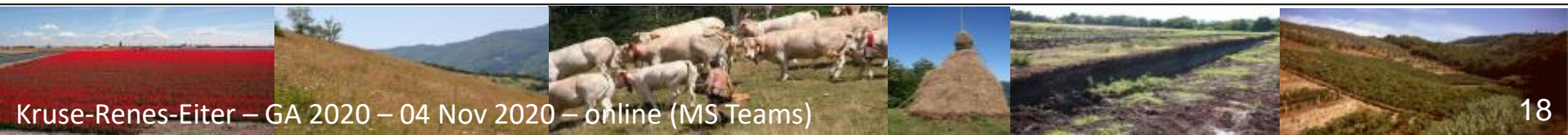
Draft

Balance/Budget 2020		
	Amount (EUR)	Remark
Account 1st Jan	2042,82	
Income		
Membership fees	1070	17 network members: 9 individuals and 8 institutions; plus individual and institutional fee for earlier years
Total	1070	
Expenditures		
Bank costs	-119,1	Stipulated for whole year (12 x 9,90 EUR plus 2 x 0,15 EUR in Feb)
Special issue print	-300	Hungarian Journal of Landscape Ecology (to PECSRL)
Interactive map project	-400	200 until Sept., 200 planned for Oct.-Dec.
Total	-819,1	
Balance	250,9	
Account 31st Dec	2293,72	Min. 3000 EUR desirable in longer run? (cf. necessity of private loans in 2018 and 2019)

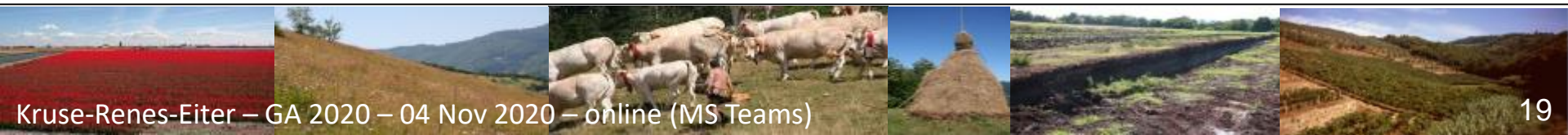


Draft

Budget 2021		
	Amount (EUR)	Remark
Account 1st Jan	2293,72	Will depend on 2020 result
Income		
Membership fees	1070	Same fees and no. of members as of Sept. in 2020 (pessimistic estimate?)
Total	1070	
Expenditures		
Bank costs	-118,8	12 months x 9,90 EUR
...	...	Suggestions welcome!
...	...	Suggestions welcome!
Total	-118,8	
Balance	951,2	
Account 31st Dec	3244,92	Min. 3000 EUR desirable in longer run? (cf. necessity of private loans in 2018 and 2019)



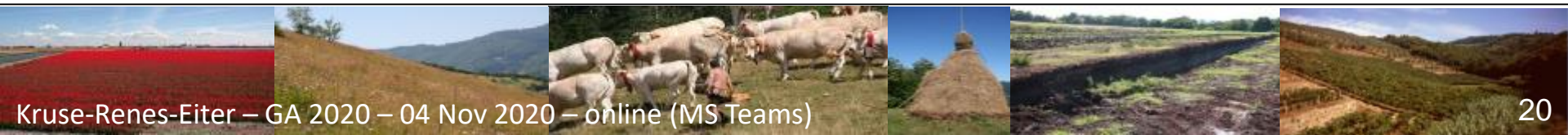
8. Discussion & approval of the budget



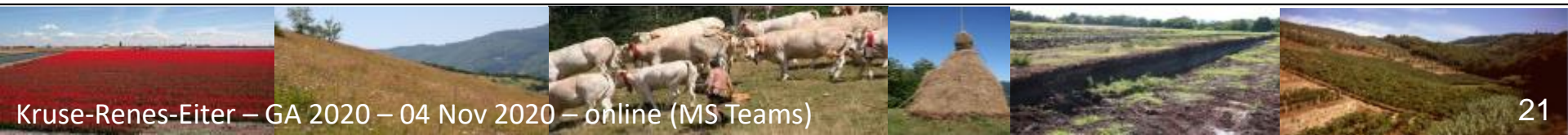
9. Confirmation of new members

10. Exclusion of members

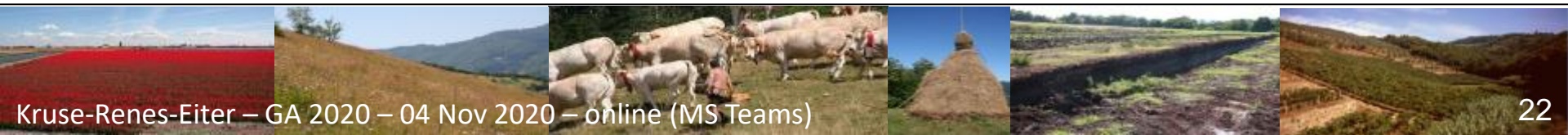
11. Election of the Executive Board



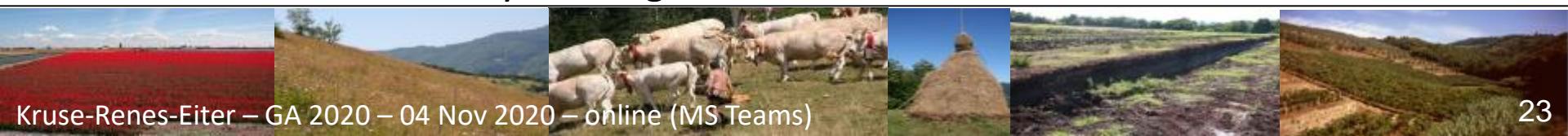
12. Election of two financial controllers or auditors



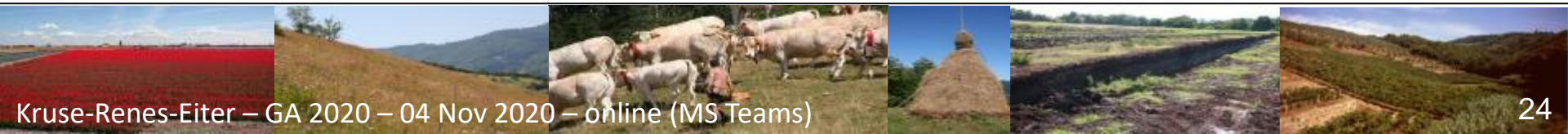
13. Information on upcoming activities



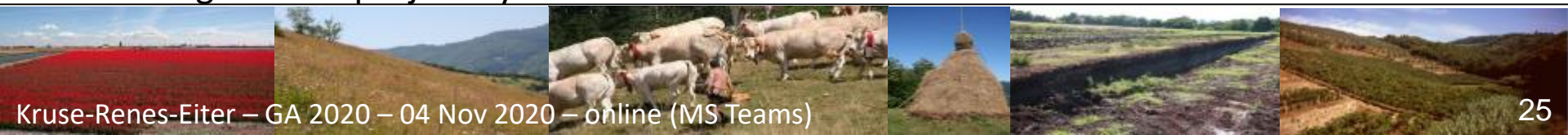
- 2019: Scattered Landscapes/Dispersed settlement (**coordinator: ???**)
- 2020: Reclamation Landscapes (coordinator: Alexandra Kruse **&...**)
- Postponed Working meeting of 2020, most probably in Northern Germany (Jork)
- Proposals under preparation:
 - COST Heritin
 - Erasmus+ on Transhumance
 - Erasmus+: RURAL REVIVE (lead: The Polish Farm Advisory and Training Centre not-for-profit Sp.)
- Martina Slamová invites all EUCALAND members to participate at <https://www.mdpi.com/journal/remotesensing>: Impact Factor (2019): 4.509, 5-Year Impact Factor (2019): 5.001 and it is CCC journal, Publication fee is currently 2200 CHF*30% possible discount=1540 CHF== cca 1435 EUR
- Cooperation with University of Florence University (UF) about photogrammetry with colleagues from UF and also Csaba Centeri. Special issue: “Application of terrestrial remote sensing techniques for human-induced hazards and landforms in forest and extensively used agricultural environments”



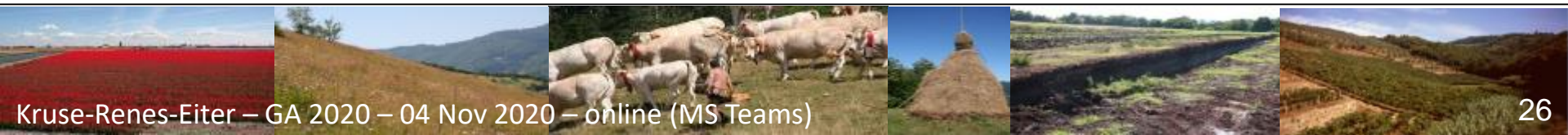
14. Miscellaneous



- EAL: Contributions where the collection is in progress still possible
- Glossary (further terms, further translations, volunteers) e.g. flood plain agriculture – any participation welcome
- Acquisition of new members, especially in those countries that are missing.
- #all: consider institutional membership instead of personal
- **PECSRL 21 Sep 27th to Oct 3rd 2021 will be open for proposals**, to remember:
 - S2. Mind the meadows. A brief review of fodder-producing land and it's future role in landscape sustainability (Hans)
 - S9. Ecosystem service research and assessment across European Landscapes (Csaba)
 - S.15 New ways for farmers to earn an economically, socially and environmentally sustainable living (EUICALAND)
- Discussion about the **next GA** – shall we continue online? If so, at what date? Due to the budget, it would be better to have it in February.
- Ideas for a **participatory budget** (around 1000€) in 2021 in case that we will not get a new lighthouse project by summer.



Further points to discuss?
Questions?
Ideas?



Thank you very much for your attention!

Contact

Alexandra Kruse: secretariat@eucalandnetwork.eu

Hans Renes: j.renes@uu.nl

Sebastian Eiter: sebastian.eiter@nibio.no

Further information

www.eucaland.net

